



Iowa Department of **REVENUE**

Tax Credits Contingent Liabilities Report

March 19, 2021

The Tax Credits Contingent Liabilities Report was created by the Tax Research and Program Analysis Section of the Iowa Department of Revenue (IDR) for the benefit of the Revenue Estimating Conference (REC). This report is part of the Tax Credits Tracking and Analysis Program. The goal of the program is to provide a repository for information concerning the awarding, usage, and effectiveness of tax credits.

Summary

- Tax credit awards in FY 2020 decreased 14.3 percent from FY 2019 to \$172.8 million. FY 2020 awards were 44.9 percent below FY 2012, when tax credit awards reached \$313.6 million (see Table 1). Although the number of awarded tax credits in FY 2020 was 20 compared to 17 in FY 2012, the decline in the total value of awards can be attributed to several programs being repealed. Awards in FY 2021 to-date total \$138.1 million, although some programs have not yet issued any current year awards.
- Nonrefundable and refundable tax credit claims reported on the IA 148 Tax Credits Schedule against individual income, corporation income, insurance premium, franchise, replacement, moneys and credits, and sales and use taxes for tax year 2017, the most recent year with complete data, were \$299.6 million, down slightly from \$300.9 million in tax year 2016.
- Sales and use tax refunds under EDA tax credit programs totaled \$9.4 million in FY 2020, which was a significant decrease from the \$28.3 million issued in FY 2019 measured on an accrual basis (see Table 5). To date, \$1.7 million in sales and use tax refunds have been issued in FY 2021. In FY 2020, an additional \$47.7 million in tax credit claims were made against individual withholding tax (see Table 6).
- The estimated contingent liability of all tax credits is \$489.4 million for FY 2021, \$495.7 million for FY 2022, and \$503.3 million for FY 2023 (see Table 8). Expected claims for all tax credits, based on historical information showing some tax credit awards are not always fully claimed, are \$431.6 million for FY 2021, and \$428.2 million for FY 2022, and \$423.6 million for FY 2023 (see Table 9).
- Contingent liability and expected claims projections for most credits are based on historical claims data from the IA 148 Tax Credits Schedule. Because claims data are constantly updated, these forecasts will change based on the best data available at the time. Updated information about tax credit awards from awarding agencies, including awards that have been either revoked, declined, or modified, will also change the estimates.
-

Tax Credit Awards

Iowa has two categories of tax credits: automatic and awarded. Awarded credits require application and a specific award in order for a taxpayer to claim the credit. The total amount of the awarded credits may also be capped. Automatic credits may be claimed by any eligible taxpayer and the total amount of claims has no limit or cap. More information about each of Iowa's tax credit programs can be found in the Appendix at the end of this report and in the [Tax Credits User's Manual](#).

The amount of awarded tax credits reached a peak in FY 2012 due to higher utilization of existing tax credit programs (see Table 1). The substantial increase during FY 2012 was mainly due to a large award made under the High Quality Jobs Program. Tax credit awards were at their lowest level in the last ten years in FY 2020.

Total FY 2020 awards decreased 14.3 percent compared to FY 2019 awards. The program with the largest percent increase in awards for FY 2020 was the Innovation Tax Credit, which increased over 15 percent from FY 2019, from \$2.1 million to \$2.4 million. The Targeted Jobs Tax Credit from Withholding awards decreased 100 percent in FY 2020 as no awards were made in FY 2020. Awards made to-date in FY 2021 total \$138.1 million with most programs still issuing awards.

Tax Credit Claims

Between tax years 2012 and 2019, individual income tax credit claims averaged \$241.4 million per year (see Table 2). Total individual income tax credit claims in 2019 decreased 8.2 percent from claims made in 2018 with the drop reflecting decreases in "other nonrefundable" and "other refundable" tax credit claims. With the exception of the Earned Income Tax Credit, all tax credits experienced a slight decrease.

The majority of tax credit claims made against corporation income tax are for the Research Activities Tax Credit. In tax years 2001 through 2005, Research Activities Tax Credit claims accounted for over 80 percent of the dollars of all corporation income tax credit claims. Since 2011, the Research Activities Tax Credit has accounted for just over 53 percent of total corporation income tax credit claims. The drop resulted from growth in the amount of "Other Credits" claimed. "Other Credits" claims historically accounted for 5 to 10 percent of all corporation claims; in tax years 2011 through 2017 as new credits were introduced, those claims accounted for over 46 percent of corporation tax credit claims. Tax year 2017 is the most recent complete year of claim data.

With the implementation of the IA 148 Tax Credits Schedule in tax year 2006 the availability of detailed income tax credit claim data has improved; note that withholding tax credits and sales and use refunds are tracked separately. In tax years 2006 through 2017, on average, 73 percent of nonrefundable tax credit claims made on the IA 148 were claimed against individual income tax (see Table 3). In those years, nonrefundable tax credit claims were made against corporation income, franchise (levied on banks), individual income, insurance premium, moneys and credits (levied on credit unions), replacement, and sales and use

taxes. The majority of IA 148 refundable tax credit claims made between 2006 and 2017 were claimed against corporation income tax, averaging just almost 69 percent of all refundable tax credit claims (see Table 4). Since 2006, refundable tax credit claims made on the IA 148 have been claimed against corporation income, franchise, individual income, insurance premium, replacement, and sales and use taxes.

Sales and Use Tax Refunds for Tax Credit Programs

As part of the Enterprise Zone Program (including the Housing component), the High Quality Jobs Programs, and the Workforce Housing Tax Incentive Program, taxpayers are allowed to file for refunds of sales and use taxes paid by contractors and subcontractors after construction is completed. The New Capital Investment and New Job and Income Programs, predecessors to the High Quality Jobs Program, also included sales and use tax refund awards. The first refunds were made during FY 2000 through the Enterprise Zone Program (see Table 5). Refunds reached an all-time high in FY 2019 when they exceeded \$28.3 million, which was an 8.3 percent increase over FY 2018. These refunds are reported on an accrual basis (refunds issued September through August) in line with the period for which the REC forecasts General Fund refunds. Refunds for FY 2020 decreased significantly to \$9.4 million which was an almost 67 percent decrease from the previous year. Year-to-date refunds for fiscal year 2021 are \$1.7 million.

Tax Credits from Withholding

There are four tax credits that can be claimed against the withholding tax. The largest program is the Iowa Industrial New Jobs Program (260E) that includes both the New Jobs Tax Credit and the Supplemental New Jobs Tax Credit. These two credits support employers' training of new employees. The Accelerated Career Education (ACE) Tax Credit is awarded to employers who sponsor training slots at community colleges. The Targeted Jobs Tax Credit is a withholding tax credit for jobs meeting certain requirements in targeted communities in the state of Iowa. These tax credit programs divert the credited withholding tax to the participating community college or city.

The withholding credits are reported on a quarterly basis. Information on withholding tax credit claims is presented since the March 2016 quarter (see Table 6). Withholding tax credit claims have averaged \$47.3 million each fiscal year between 2017 and 2020. It is apparent that total withholding credits are strongly driven by the New Jobs Tax Credit (260E) (see Figure 1).

On average, there have been \$40.6 million of New Jobs Tax Credits awarded each year since the program's inception in FY 2001. However, awards fell below that average for the five fiscal years prior to 2018 and fell below \$30 million in FY 2020 for the first time since FY 2004 (see Table 7). In addition, participants in the 260E program with sufficient job creation are eligible to claim an income tax credit; the amount of the income tax credits claimed is included in Table 7.

Tax Credit Contingent Liabilities Projection

Forecasts of the liability facing General Fund revenues due to tax credits show an upward trend in potential tax credit claims (see Table 8). The contingent liability amounts were estimated using a number of methods, but in all cases, it was assumed that 100 percent of awards under a cap would be made each fiscal year unless an awarding agency indicates otherwise. It is also assumed that 100 percent of awards issued would be claimed; for Investment Tax Credit awards near expiration it is assumed that 100 percent of reported carry forward would be claimed, with the timing of claims based on the observed timing of past claims. The methods used for forecasting each tax credit are listed in the table footnotes.

Based on the award history and current information, the FY 2021 allocation of the \$170 million EDA cap is: High Quality Jobs Program - \$105 million, Workforce Housing Tax Incentive Program - \$25 million, Redevelopment Tax Credit - \$10 million, Renewable Chemical Production Tax Credit Program - \$10 million, Venture Capital Tax Credit – Innovation Fund - \$8 million, Venture Capital Tax Credit – Qualifying Business - \$2 million, and Assistive Device Tax Credit - \$0; the remainder is to be unallocated to finance expected costs of the Renewable Chemical Production Tax Credit enacted during the 2016 Legislative session.

The Tax Credit Contingent Liabilities Projection table is based in large part on claim data that has been collected from the IA 148 Tax Credits Schedule. The information collected from the IA 148 is used to estimate the timing of when awards or forecasted automatic tax credits are likely to be claimed. In the case of nonrefundable tax credits, the timing may be adjusted in order to meet the assumption that 100 percent of credits are claimed before expiration. Due to the nature of this data it is likely that credit forecasts will vary between reports as the forecasted timing is updated with the receipt and verification of more data.

The historical numbers provided are actual claims made against each of the tax credits on the IA 148 or the IA 1040, although FY 2020 numbers are likely to increase as tax credit claims continue to be verified and data entered. Actual claims may not equal the amount of awards issued. If incorrect tax credit claims are made, these claims are reviewed by IDR staff. The historical numbers for fiscal years 2018 and 2019 may also change as the review of tax credit claims in these years continues.

Tax Credit Expected Claims Projection

Forecasts of expected tax credit claims are based on historical claims data and expected awards data and indicate that tax credit claims will likely continue to increase before decreasing in later years as several tax credits expire (see Table 9). This table presents the amounts of tax credits that are likely to be claimed versus the maximum amount of credits that can be claimed as shown in Table 8. The amounts of expected claims were forecasted using a number of methods listed in the table footnotes.

The historical numbers provided are the same numbers presented in Table 8. The primary difference between the Contingent Liabilities Projection (Table 8) and the Expected Claims Projection is the amount of awarded credits that are actually expected to be awarded and claimed. For example, the amounts presented in Table 8 for the Accelerated Career Education Tax Credit are reduced from the full cap amount in Table 9 as historically less than 100 percent of the awards made are actually claimed. The aggregate difference between contingent liabilities and expected claims estimates can be seen in Figure 2.

The Expected Claims Projection table, like the Contingent Liabilities Projection table, is based in large part on claims data that has been collected from the IA 148 Tax Credits Schedule. The information collected from the IA 148 is used to estimate the timing of when awards are likely to be claimed. The IA 148 data is also used to estimate the percentage of nonrefundable credits that will be claimed before they expire. Unlike the Contingent Liabilities Projection, it is not assumed that 100 percent of credits will be claimed unless that is what is reflected by actual claims. Due to the nature of this data it is likely that credit forecasts will vary between reports as the timing and estimated percentage claimed changes with receipt and verification of more data.

Table 1: Tax Credit Awards by Fiscal Year

	FY 2012	FY 2013	FY 2014	FY 2015	FY 2016	FY 2017	FY 2018	FY 2019	FY 2020	FY 2021*
Accelerated Career Education Program (ACE) [†]	\$5,400,000	\$5,400,000	\$5,400,000	\$5,400,000	\$5,400,000	\$5,400,000	\$5,400,000	\$5,400,000	\$5,400,000	\$0
Assistive Device Tax Credit	\$0	\$0	\$0	\$0	\$0	\$0	\$0	\$0	\$0	\$0
Beginning Farmer Tax Credit [†]	\$5,222,987	\$5,756,759	\$5,981,266	\$6,508,811	\$6,959,738	\$8,505,027	\$9,568,673	\$5,989,112	\$6,408,160	\$6,513,672
Custom Farming Contract Tax Credit [†]	n/a	n/a	\$28,975	\$30,046	\$89,704	\$114,786	\$16,595	n/a	n/a	n/a
Endow Iowa Tax Credit ^{††}	\$4,523,397	\$5,779,542	\$5,999,996	\$6,000,000	\$6,000,000	\$6,000,000	\$6,000,000	\$6,000,000	\$6,000,000	\$6,000,000
Enterprise Zone Program [†]	\$6,569,013	\$6,340,963	\$16,549,566	n/a	n/a	n/a	n/a	n/a	n/a	n/a
Enterprise Zone Program - Housing Component [†]	\$16,780,850	\$25,400,528	\$48,263,578	n/a	n/a	n/a	n/a	n/a	n/a	n/a
Farm to Food Donation Tax Credit	n/a	n/a	n/a	\$12,500	\$14,089	\$9,097	\$11,083	\$30,416	\$26,465	\$30,770
Film, Television, And Video Project Promotion Program [†]	\$14,644,071	\$89,047	n/a	n/a	n/a	n/a	n/a	n/a	n/a	n/a
Geothermal Heat Pump Tax Credit (Awarded)	n/a	n/a	n/a	n/a	n/a	n/a	n/a	n/a	\$731,624	\$281,793
High Quality Jobs Program [†]	\$144,378,886	\$116,746,179	\$42,568,140	\$50,478,792	\$61,333,580	\$45,150,681	\$66,513,787	\$43,013,586	\$23,634,928	\$19,195,155
Historic Preservation Tax Credit [†]	\$44,703,623	\$26,960,281	\$35,625,483	\$39,022,230	\$65,679,991	\$45,899,311	\$45,407,164	\$44,313,711	\$41,191,862	\$4,683,078
Iowa Industrial New Jobs Training Program (260E)	\$48,500,000	\$35,655,727	\$38,667,132	\$39,860,995	\$40,294,972	\$38,167,000	\$44,595,000	\$37,985,000	\$27,495,000	\$27,620,000
Redevelopment Tax Credit [†]	\$4,925,103	\$4,915,688	\$9,851,383	\$8,829,915	\$9,924,043	\$8,736,273	\$9,842,165	\$9,938,469	\$10,000,000	\$10,000,000
Renewable Chemical Production Tax Credit Program	n/a	n/a	n/a	n/a	n/a	n/a	\$542,114	\$1,000,000	\$1,250,759	\$0
Renewable Energy Tax Credit [†]	\$3,011,408	\$4,166,208	\$5,629,134	\$5,404,123	\$4,866,378	\$5,079,895	\$4,663,003	\$4,875,294	\$4,696,922	\$4,511,842
School Tuition Organization Tax Credit ^{††}	\$7,499,414	\$8,749,061	\$8,748,680	\$11,999,190	\$12,000,000	\$12,000,000	\$12,000,206	\$11,961,358	\$11,267,907	\$6,253,390
Solar Energy System Tax Credit [†]	n/a	\$652,144	\$1,498,364	\$4,411,891	\$5,083,754	\$5,004,261	\$4,952,307	\$5,048,037	\$5,006,704	\$4,998,160
Targeted Jobs Tax Credit from Withholding	\$6,113,937	\$9,685,051	\$0	\$2,214,081	\$705,900	\$2,444,293	\$10,298,240	\$562,773	\$0	\$0
Venture Capital Tax Credit - Fund of Funds [†]	\$0	\$11,295,681	\$12,772,951	\$0	\$358,689	\$756,169	\$0	\$0	\$0	\$0
Venture Capital Tax Credit - Innovation Fund [†]	n/a	\$0	\$815,569	\$2,194,353	\$1,120,374	\$774,101	\$1,532,889	\$2,078,772	\$1,650,569	\$1,930,689
Venture Capital Tax Credit - Qualifying Business [†]	\$598,832	\$545,425	\$0	\$0	\$1,234,707	\$1,999,001	\$2,000,000	\$2,000,000	\$2,000,000	\$2,000,006
Wind Energy Production Tax Credit [†]	\$763,797	\$1,582,498	\$1,577,165	\$1,669,737	\$1,650,877	\$1,657,604	\$1,601,299	\$1,505,870	\$1,019,931	\$854,928
Workforce Housing Tax Incentive Program - Allocated [†]	n/a	n/a	n/a	\$20,000,000	\$20,000,000	\$20,000,000	\$20,000,000	\$20,000,000	\$25,000,000	\$25,000,000
Workforce Housing Tax Incentive Program Awarded (not included in total) ^{†‡}	n/a	n/a	n/a	\$0	\$0	\$5,296,301	\$18,682,879	\$19,876,984	\$24,994,624	\$18,183,605
Total Credits Awarded Each Fiscal Year	\$313,635,318	\$269,720,782	\$239,977,382	\$204,036,664	\$242,716,796	\$207,697,499	\$244,944,525	\$201,702,398	\$172,780,831	\$138,057,088

Source: Tax Credit Award, Claim & Transfer Administration System (CACTAS) and Awarding Agencies

¹ Awards made on CY basis, but reflected in first FY in which the credits can be claimed.

² The Workforce Housing Tax Incentive Program currently is subject to two caps, one on allocations and one on the issuance of awards. Activity under both is presented in the table but only the allocated awards are included in the total because that cap is in line with many other awarded tax credits.

n/a = program not yet created or discontinued program

[†]=tax credit programs that have capped awards

*=partial award year

Table 2: Tax Credit Claims by Tax Year

	2012	2013	2014	2015	2016	2017	2018	2019	2020*
Total Individual Income Tax Credits	\$195,725,724	\$290,148,864	\$272,507,966	\$221,768,067	\$233,870,653	\$226,277,454	\$255,752,995	\$234,880,426	\$299,227
Child & Dependent Care Tax Credit	\$4,488,530	\$3,813,708	\$4,061,279	\$5,686,294	\$6,086,567	\$6,114,110	\$5,610,709	\$5,476,952	\$6,744
Early Childhood Development Tax Credit	\$846,434	\$784,165	\$728,777	\$683,919	\$658,405	\$688,650	\$644,109	\$618,398	\$1,713
Earned Income Tax Credit	\$31,031,962	\$65,570,550	\$71,094,646	\$71,931,413	\$69,582,239	\$68,651,800	\$67,644,269	\$68,638,020	\$184,397
Taxpayers Trust Fund Tax Credit	n/a	\$88,258,180	\$24,945,414	\$0	\$0	\$0	n/a	n/a	n/a
Tuition and Textbook Tax Credit	\$15,319,837	\$15,168,557	\$15,356,667	\$15,489,317	\$15,344,341	\$15,306,991	\$15,134,975	\$14,859,715	\$69,103
Volunteer Firefighter and Emergency Medical Services Personnel and Reserve Peace Officer Tax Credit	n/a	\$634,705	\$1,366,107	\$1,366,431	\$1,366,212	\$1,366,113	\$1,326,766	\$1,321,196	\$14,844
Other Nonrefundable Tax Credits	\$116,078,500	\$99,942,491	\$137,869,472	\$103,836,104	\$111,984,960	\$103,093,746	\$121,887,315	\$109,362,109	\$22,426
Other Refundable Tax Credits	\$27,960,461	\$15,976,508	\$17,085,604	\$22,774,589	\$28,847,929	\$31,056,044	\$43,504,852	\$34,604,036	\$0

	2012	2013	2014	2015	2016	2017	2018*	2019*	2020*
Total Corporation Income Tax Credits	\$102,165,291	\$112,712,619	\$113,469,832	\$98,464,726	\$95,740,694	\$107,016,557	\$98,446,415	\$86,939,809	\$31,406
Other Credits (Nonrefundable)	\$23,794,137	\$37,701,293	\$38,126,538	\$20,842,788	\$17,637,058	\$22,402,743	#	#	#
Other Credits (Refundable)	\$25,380,940	\$14,917,037	\$21,478,680	\$23,324,278	\$26,052,874	\$27,057,658	#	#	#
Iowa Industrial New Jobs Income Tax Credit (260E)	\$1,076,651	\$1,362,158	\$1,162,157	\$1,131,797	\$1,085,970	\$429,005	#	#	#
Research Activities Tax Credit	\$51,913,563	\$58,732,131	\$52,702,457	\$53,165,863	\$50,964,792	\$57,127,151	#	#	#

Source: Tax Credit Award, Claim & Transfer Administration System (CACTAS)

* = incomplete data for tax year

n/a = program not yet created, or discontinued

= tax credit detail not yet available

Table 3: Nonrefundable Tax Credit Claims from IA 148

Tax Year	Tax Type							Total
	Corporation Income Tax	Franchise Tax	Individual Income Tax	Insurance Premium Tax	Moneys and Credits Tax	Replacement Tax	Sales & Use Taxes	
2006	\$19,415,417	\$717,169	\$90,260,420	\$3,282,851	\$0	\$0	\$0	\$113,675,857
2007	\$24,328,411	\$632,919	\$72,627,752	\$1,981,714	\$0	\$0	\$0	\$99,570,796
2008	\$21,318,279	\$4,002,099	\$82,199,152	\$4,436,085	\$0	\$0	\$241,264	\$112,196,879
2009	\$27,578,208	\$1,072,601	\$72,307,032	\$13,718,892	\$0	\$516,821	\$0	\$115,193,554
2010	\$19,379,647	\$3,123,320	\$81,812,871	\$4,016,374	\$0	\$726,025	\$0	\$109,058,237
2011	\$18,679,395	\$2,194,248	\$91,928,999	\$9,109,119	\$0	\$763,797	\$0	\$122,675,558
2012	\$24,870,788	\$3,448,056	\$116,078,500	\$5,874,008	\$0	\$791,633	\$54,732	\$151,117,717
2013	\$39,063,451	\$3,368,541	\$90,571,320	\$6,483,552	\$0	\$780,983	\$126,338	\$140,394,185
2014	\$39,288,695	\$4,463,110	\$125,736,614	\$6,050,833	\$268,002	\$837,557	\$487,649	\$177,132,460
2015	\$21,974,585	\$4,929,173	\$106,490,057	\$8,250,131	\$216,803	\$789,564	\$385,532	\$143,035,845
2016	\$18,723,028	\$6,821,233	\$118,668,723	\$8,949,402	\$272,597	\$787,002	\$502,601	\$154,724,586
2017	\$22,831,748	\$9,607,128	\$106,644,195	\$9,628,790	\$132,512	\$778,554	\$425,366	\$150,048,293

Source: Tax Credit Award, Claim & Transfer Administration System (CACTAS)

Data is provided for all tax years where IA 148 data collection is completed; ongoing verification and corrections as well as new claims on amended returns may result in future changes to these numbers.

Table 4: Refundable Tax Credit Claims from IA 148

Tax Year	Tax Type							Total
	Corporation Income Tax	Franchise Tax	Individual Income Tax	Insurance Premium Tax	Moneys and Credits Tax	Replacement Tax	Sales & Use Taxes	
2006	\$55,454,432	\$0	\$7,929,476	\$0	\$0	\$0	\$0	\$63,383,908
2007	\$67,612,431	\$4,021,902	\$11,098,475	\$3,833,435	\$0	\$0	\$23,090	\$86,589,333
2008	\$61,678,787	\$4,382,592	\$13,505,319	\$4,433,454	\$0	\$0	\$0	\$84,000,152
2009	\$56,151,059	\$2,347,749	\$14,285,781	\$1,771,058	\$0	\$0	\$0	\$74,555,647
2010	\$72,931,712	\$9,899,916	\$17,115,928	\$2,375,733	\$0	\$0	\$0	\$102,323,289
2011	\$73,776,766	\$4,522,792	\$18,155,667	\$1,074,897	\$0	\$0	\$0	\$97,530,122
2012	\$77,294,503	\$11,057,276	\$27,960,461	\$2,518,789	\$0	\$0	\$0	\$118,831,029
2013	\$73,649,168	\$10,248,752	\$24,357,473	\$1,715,232	\$0	\$0	\$0	\$109,970,625
2014	\$74,181,137	\$9,411,004	\$30,381,810	\$1,343,225	\$0	\$0	\$0	\$115,317,176
2015	\$76,490,141	\$14,910,335	\$40,740,816	\$0	\$0	\$42,530	\$0	\$132,183,822
2016	\$77,017,666	\$17,766,922	\$43,780,903	\$7,607,358	\$0	\$0	\$0	\$146,172,849
2017	\$84,184,809	\$20,213,107	\$45,109,844	\$0	\$0	\$0	\$0	\$149,507,760

Source: Tax Credit Award, Claim & Transfer Administration System (CACTAS)

Data is provided for all tax years where IA 148 data collection is completed; ongoing verification and corrections as well as new claims on amended returns may result in future changes to these numbers.

Table 5: Sales and Use Tax Refunds by Tax Credit Program by Fiscal Year

	Enterprise Zone	Housing-Enterprise Zone	New Jobs & Income Program	New Capital Investment Program	High Quality Jobs Program	Workforce Housing Program	Total Refunds
FY 2000	\$104,215	\$84,248					\$188,463
FY 2001	\$445,591	\$173,764	\$893,857				\$1,513,212
FY 2002	\$801,155	\$211,117	\$29,379				\$1,041,651
FY 2003	\$2,125,799	\$313,133	\$429,977				\$2,868,909
FY 2004	\$405,761	\$505,189	\$742,304				\$1,653,254
FY 2005	\$693,913	\$751,334	\$452,683	\$70,059			\$1,967,989
FY 2006	\$459,136	\$1,217,257	\$366,294	\$956,529	\$0		\$2,999,216
FY 2007	\$425,907	\$1,880,069	\$1,526,798	\$4,119,842	\$0		\$7,952,616
FY 2008	\$2,038,470	\$1,242,233	\$1,443,810	\$163,136	\$2,856,991		\$7,744,640
FY 2009	\$2,674,067	\$1,424,279	\$0	\$0	\$2,580,652		\$6,678,998
FY 2010	\$912,514	\$1,212,217	\$20,497	\$0	\$5,700,745		\$7,845,973
FY 2011	\$638,690	\$2,655,424	\$0	\$0	\$1,946,981		\$5,241,095
FY 2012	\$323,150	\$1,419,714	\$0	\$0	\$392,767		\$2,135,631
FY 2013	\$4,345,177	\$1,959,555	\$0	\$0	\$3,325,099		\$9,629,831
FY 2014	\$383,675	\$779,973	\$0	\$0	\$2,582,612		\$3,746,260
FY 2015	\$2,507,415	\$3,987,498	\$0	\$0	\$13,183,489		\$19,678,402
FY 2016	\$217,660	\$2,832,304	\$0	\$0	\$13,267,765		\$16,317,729
FY 2017	\$1,312,382	\$2,092,372	\$0	\$0	\$10,361,507	\$226,789	\$13,993,050
FY 2018	\$1,013,364	\$1,629,495	\$0	\$0	\$20,370,698	\$3,074,266	\$26,087,823
FY 2019	\$0	\$1,141,474	\$0	\$0	\$24,612,056	\$2,506,446	\$28,259,976
FY 2020	\$0	\$0	\$0	\$0	\$6,204,248	\$3,149,607	\$9,353,855
FY 2021 YTD	\$0	\$0	\$0	\$0	\$265,309	\$1,422,582	\$1,687,891

Source: Tax Credit Award, Claim & Transfer Administration System (CACTAS)

Note: Refunds are reported on an accrual basis

Table 6: Withholding Tax Credits Claimed by Quarter

Quarter	Number of Claims	Total Tax Credit Claims	New Jobs Tax Credit (260E)	Supplemental New Jobs Tax Credit	Targeted Jobs Tax Credit	ACE Tax Credit
3/31/2016	645	\$12,208,472	\$6,530,315	\$3,562,342	\$1,170,612	\$945,203
6/30/2016	636	\$11,802,984	\$5,970,227	\$3,342,947	\$1,512,563	\$977,247
9/30/2016	622	\$12,715,634	\$6,465,350	\$3,699,015	\$1,269,200	\$1,282,069
12/31/2016	610	\$11,823,153	\$6,293,662	\$3,294,850	\$1,193,431	\$1,041,210
3/31/2017	603	\$11,476,226	\$6,036,638	\$3,418,380	\$1,246,296	\$774,912
6/30/2017	599	\$11,912,989	\$6,261,458	\$3,381,951	\$1,121,450	\$1,148,130
9/30/2017	582	\$11,606,390	\$5,562,515	\$3,546,297	\$1,189,317	\$1,308,261
12/31/2017	590	\$12,469,362	\$6,631,517	\$3,758,300	\$1,215,479	\$864,066
3/31/2018	586	\$11,499,088	\$5,709,788	\$3,506,064	\$1,265,524	\$1,017,712
6/30/2018	584	\$11,391,314	\$5,725,253	\$3,311,342	\$1,291,343	\$1,063,376
9/30/2018	562	\$11,632,621	\$5,831,518	\$3,276,207	\$1,111,711	\$1,413,185
12/31/2018	459	\$9,516,312	\$4,869,889	\$2,861,559	\$934,810	\$850,054
3/31/2019	561	\$12,051,004	\$6,145,135	\$3,677,860	\$1,328,422	\$899,587
6/30/2019	546	\$12,080,619	\$6,403,803	\$3,553,105	\$1,140,330	\$983,381
9/30/2019	545	\$12,715,557	\$6,266,618	\$3,599,406	\$1,245,081	\$1,604,452
12/31/2019	542	\$12,740,349	\$6,168,064	\$3,758,770	\$1,753,872	\$1,059,643
3/31/2020	529	\$12,061,849	\$6,008,690	\$3,803,117	\$1,333,372	\$916,670
6/30/2020	513	\$11,497,090	\$5,561,720	\$3,666,379	\$1,251,141	\$1,017,850
9/30/2020	470	\$11,120,909	\$5,504,112	\$3,393,151	\$1,206,572	\$1,017,074
12/31/2020	425	\$10,107,296	\$4,863,030	\$3,174,719	\$1,335,889	\$733,658
FY 2017	2,434	\$47,928,002	\$25,057,108	\$13,794,196	\$4,830,377	\$4,246,321
FY 2018	2,342	\$46,966,154	\$23,629,073	\$14,122,003	\$4,961,663	\$4,253,415
FY 2019	2,128	\$45,280,556	\$23,250,345	\$13,368,731	\$4,515,273	\$4,146,207
FY 2020	2,129	\$49,014,845	\$24,005,092	\$14,827,672	\$5,583,466	\$4,598,615
YTD FY 2021	1,408	\$32,725,295	\$15,928,862	\$10,234,249	\$3,793,602	\$2,768,582
CY 2016	2,513	\$48,550,243	\$25,259,554	\$13,899,154	\$5,145,806	\$4,245,729
CY 2017	2,374	\$47,464,967	\$24,492,128	\$14,104,928	\$4,772,542	\$4,095,369
CY 2018	2,191	\$44,039,335	\$22,136,448	\$12,955,172	\$4,603,388	\$4,344,327
CY 2019	2,194	\$49,587,529	\$24,983,620	\$14,589,141	\$5,467,705	\$4,547,063
CY 2020	1,937	\$44,787,144	\$21,937,552	\$14,037,366	\$5,126,974	\$3,685,252

Source: IDR withholding returns data

Figure 1: Withholding Tax Credit Claims by Quarter

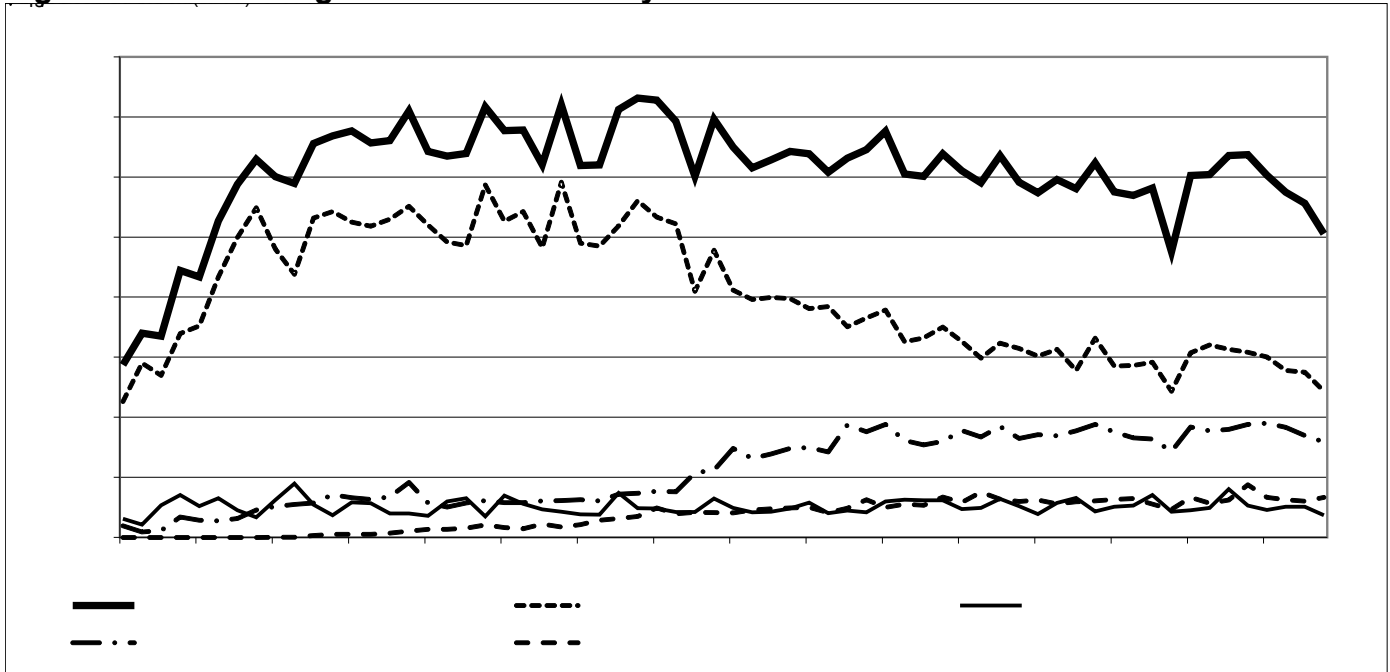


Table 7: Iowa Industrial New Jobs Training Program (260E) Award and Claim Information

	260E Withholding Credits Awarded	260E and Supplemental Credit Claims on Withholding Returns	New Jobs Income Tax Credit Claims	Total 260E Withholding and Income Tax Credit Claims
FY 2001	\$38,567,500	n/a	n/a	
FY 2002	\$36,465,750	n/a	n/a	
FY 2003	\$26,705,000	n/a	n/a	
FY 2004	\$26,746,500	n/a	n/a	
FY 2005	\$51,995,000	n/a	n/a	
FY 2006	\$40,280,000	\$29,928,649	n/a	
FY 2007	\$60,110,000	\$42,996,886	\$4,473,924	\$47,470,810
FY 2008	\$59,050,000	\$47,507,655	\$4,627,118	\$52,134,773
FY 2009	\$48,925,000	\$47,189,017	\$4,403,826	\$51,592,843
FY 2010	\$32,065,000	\$47,526,601	\$3,082,991	\$50,609,592
FY 2011	\$40,755,000	\$45,892,441	\$2,355,421	\$48,247,862
FY 2012	\$48,500,000	\$48,660,167	\$2,618,095	\$51,278,262
FY 2013	\$35,655,727	\$43,909,851	\$3,325,110	\$47,234,961
FY 2014	\$38,667,132	\$42,813,331	\$2,017,380	\$44,830,711
FY 2015	\$39,860,995	\$42,659,294	\$1,623,321	\$44,282,615
FY 2016	\$40,285,007	\$39,329,976	\$2,301,791	\$41,631,767
FY 2017	\$38,167,000	\$38,851,304	\$2,832,310	\$41,683,614
FY 2018	\$44,600,000	\$37,751,076	\$1,732,006	\$39,483,082
FY 2019	\$37,985,000	\$36,619,076	\$1,502,818	\$38,121,894
FY 2020	\$27,495,000	\$38,832,764	\$1,647,811	\$40,480,575
YTD FY 2021	\$27,620,000	\$26,163,111	\$642,729	\$26,805,840

Source: IDR data and data reported by the Iowa Economic Development Authority

Table 8: Tax Credit Contingent Liabilities Projection

Capped Programs	History*			Forecast				
	FY 2018	FY 2019	FY 2020	FY 2021	FY 2022	FY 2023	FY 2024	FY 2025
Accelerated Career Education Tax Credit ²	\$4,253,415	\$4,146,207	\$4,598,615	\$5,400,000	\$5,400,000	\$5,400,000	\$5,400,000	\$5,400,000
Assistive Device Tax Credit ³	\$0	\$0	\$0	\$0	\$0	\$0	\$0	\$0
Beginning Farmer Tax Credit ⁴	\$5,128,622	\$4,755,125	\$4,124,488	\$8,466,930	\$10,776,463	\$12,097,117	\$12,558,833	\$12,951,585
Custom Farming Contract Tax Credit ⁵	\$104,212	\$30,539	\$11,697	\$18,390	\$6,277	\$8,866	\$8,866	\$8,866
Endow Iowa Tax Credit ⁴	\$5,874,393	\$5,167,603	\$4,405,244	\$6,860,431	\$7,224,997	\$6,485,866	\$7,083,675	\$7,116,505
Enterprise Zone Program ⁴	\$5,046,473	\$2,147,319	\$773,792	\$8,094,503	\$6,764,610	\$5,507,972	\$1,954,289	\$1,750,582
Enterprise Zone Program - Housing Component ⁶	\$8,002,277	\$7,163,320	\$4,826,342	\$14,316,758	\$5,165,186	\$1,224,004	\$0	\$0
Geothermal Heat Pump Tax Credit ⁷	\$495,540	\$175,792	\$500,058	\$1,066,034	\$1,137,221	\$1,083,667	\$566,160	\$126,723
High Quality Jobs Program ⁴	\$36,688,404	\$34,940,477	\$30,054,795	\$84,210,676	\$98,904,996	\$100,491,647	\$104,095,767	\$85,782,037
Historic Preservation Tax Credit ⁴	\$60,239,484	\$36,727,477	\$55,266,018	\$43,566,533	\$38,080,021	\$40,518,579	\$42,621,417	\$41,464,237
Redevelopment Tax Credit ⁸	\$5,133,977	\$8,997,263	\$4,585,775	\$7,253,840	\$11,633,320	\$15,021,761	\$10,907,216	\$11,257,980
Renewable Chemical Production Tax Credit Program ⁸	\$0	\$865	\$1,028,076	\$1,171,150	\$5,080,488	\$7,834,999	\$10,000,000	\$10,000,000
Renewable Energy Tax Credit ⁴	\$3,688,173	\$5,259,899	\$6,065,328	\$4,573,346	\$6,306,073	\$6,024,200	\$5,425,072	\$5,151,560
School Tuition Organization Tax Credit ⁴	\$11,836,187	\$10,921,558	\$9,658,728	\$13,424,081	\$15,113,598	\$17,060,992	\$18,460,196	\$20,018,117
Solar Energy System Tax Credit ⁴	\$3,759,747	\$4,210,847	\$3,923,779	\$4,165,905	\$4,314,105	\$2,317,363	\$1,634,777	\$1,423,251
Supplemental Research Activities Tax Credit ⁹	\$3,363,819	\$2,633,504	\$2,478,431	\$3,067,681	\$1,747,095	\$3,368,979	\$4,580,911	\$4,770,232
Venture Capital Tax Credit - Innovation Fund ⁸	\$861,527	\$1,167,885	\$1,366,217	\$4,612,470	\$6,578,253	\$6,981,203	\$7,105,228	\$7,725,901
Venture Capital Tax Credit - Qualifying Business ⁸	\$2,077,398	\$1,573,194	\$1,025,513	\$2,212,112	\$2,019,708	\$2,016,121	\$2,003,405	\$2,000,000
Venture Capital Tax Credit - Venture Capital Funds ¹⁰	\$750	\$8,819	\$2,395	\$0	\$0	\$0	\$0	\$0
Wind Energy Production Tax Credit ⁴	\$947,746	\$3,716,701	\$659,921	\$1,119,811	\$484,330	\$421,316	\$494,425	\$498,522
Workforce Housing Tax Incentive Program ¹¹	\$9,442,745	\$16,029,954	\$21,288,407	\$29,577,950	\$25,593,956	\$23,879,210	\$24,579,976	\$25,010,184
TOTAL OF CAPPED PROGRAMS	\$166,944,889	\$149,774,348	\$156,643,619	\$243,178,601	\$252,330,697	\$257,743,861	\$259,480,212	\$242,456,282

² Estimates are based on the assumption that the full amount of the cap will be awarded and claimed each year.

³ Estimates are based on information from the awarding agency and include Sales and Use Tax Refunds, Investment Tax Credits, and Corporation Tax Credit for Third Party Sales Tax. Supplemental Research Activities Tax Credit (SRAC) awards are accounted for under the Supplemental RAC estimates. This program is included in the \$170 million IEDA tax credit award cap.

⁴ Estimates are based on claim information collected from the IA 148 and the assumption that the full amount of the cap will be awarded each future year and fully claimed.

⁵ Estimates are based on claim information collected from the IA 148 and accounts for the fact that this tax credit expired December 31, 2017.

⁶ Estimates are based on information from the awarding agency and include Sales and Use Tax Refunds and Investment Tax Credits. This program was included in the \$170 million IEDA tax credit award cap prior to its repeal effective July 1, 2014.

⁷ Estimates are based on claim information collected from the IA 148, the expiration of the tax credit effective December 31, 2016, and the reinstatement of the credit in 2019 as a \$1 million capped credit.

⁸ Estimates are based on claim information collected from the IA 148 and the assumption that the full amount of the cap will be awarded each future year and fully claimed. This program is included in the \$170 million IEDA tax credit award cap.

⁹ Estimates account for IEDA capping the amount of Supplemental RAC that can be claimed and changes to the credit calculation based on corporate gross revenues. The credit is included in the \$170 million IEDA tax credit cap.

¹⁰ Estimates are based on claim information collected from the IA 148 and the elimination of the program.

¹¹ Estimates are based on actual award allocations, estimated timing based on information received from the awarding agency, and include Investment Tax Credits and Sales and Use Tax Refunds. This program is included in the \$170 million IEDA tax credit award cap.

Table 8 Continued: Tax Credit Contingent Liabilities Projection

Uncapped Programs	History*			Forecast				
	FY 2018	FY 2019	FY 2020	FY 2021	FY 2022	FY 2023	FY 2024	FY 2025
Adoption Tax Credit ¹²	\$974,932	\$999,837	\$946,198	\$1,386,816	\$1,537,559	\$1,703,962	\$1,888,373	\$2,092,742
Biodiesel Blended Fuel Tax Credit ¹³	\$18,341,310	\$17,326,088	\$18,245,203	\$23,188,983	\$18,530,336	\$19,468,137	\$20,419,606	\$20,876,197
Charitable Conservation Contribution Tax Credit ¹⁴	\$724,656	\$955,372	\$499,698	\$929,230	\$973,903	\$1,024,002	\$1,087,686	\$1,133,340
Child & Dependent Care Tax Credit ¹⁵	\$6,114,110	\$5,547,447	\$6,634,058	\$6,590,601	\$6,379,653	\$6,646,393	\$7,770,248	\$11,354,876
E15 Plus Gasoline Promotion Tax Credit ¹³	\$1,003,936	\$1,480,656	\$2,147,479	\$2,646,364	\$3,174,068	\$3,518,106	\$3,944,669	\$4,390,558
E85 Gasoline Promotion Tax Credit ¹³	\$2,552,412	\$2,623,828	\$2,679,815	\$2,882,772	\$2,345,422	\$2,492,394	\$2,689,888	\$2,869,961
Early Childhood Development Tax Credit ¹⁵	\$688,650	\$641,448	\$689,551	\$666,429	\$670,098	\$707,852	\$725,223	\$759,286
Earned Income Tax Credit ¹⁵	\$68,651,800	\$66,881,268	\$71,751,025	\$70,063,784	\$69,276,948	\$72,213,821	\$72,391,008	\$72,201,366
Ethanol Promotion Tax Credit ¹³	\$860,171	\$677,150	\$485,110	\$829,119	\$510,059	\$74,110	\$11,552	\$0
Farm to Food Donation Tax Credit ¹⁶	\$12,388	\$17,284	\$24,575	\$27,386	\$31,689	\$36,373	\$41,865	\$48,103
Geothermal Tax Credit ¹⁷	\$317,469	\$1,159,048	\$259,291	\$65,488	\$35,914	\$35,914	\$35,914	\$35,914
Iowa Industrial New Job Training Program (260E) ¹⁸	\$39,483,082	\$38,121,894	\$40,480,575	\$42,646,111	\$42,908,870	\$43,012,947	\$43,060,666	\$43,389,900
New Capital Investment Program ¹⁹	\$1,170	\$0	\$0	\$0	\$0	\$0	\$0	\$0
New Jobs and Income Program ¹⁹	\$1,617	\$0	\$0	\$0	\$0	\$0	\$0	\$0
Research Activities Tax Credit ²⁰	\$72,370,984	\$84,233,669	\$81,943,833	\$70,876,356	\$73,998,377	\$76,852,477	\$80,503,753	\$85,428,880
Targeted Jobs Tax Credit from Withholding ²¹	\$5,591,349	\$4,739,246	\$5,786,735	\$7,217,332	\$7,106,454	\$1,445,232	\$1,381,138	\$1,295,408
Tuition and Textbook Tax Credit ¹⁵	\$15,306,991	\$14,459,487	\$14,799,679	\$14,931,560	\$14,635,885	\$14,973,323	\$15,003,195	\$14,879,426
Volunteer Firefighter and Emergency Medical Services Personnel and Reserve Peace Officer Tax Credit ¹⁵	\$1,366,113	\$1,301,122	\$1,287,790	\$1,308,980	\$1,273,909	\$1,305,747	\$1,309,078	\$1,275,934
TOTAL OF UNCAPPED PROGRAMS	\$234,363,140	\$241,164,844	\$248,660,616	\$246,257,310	\$243,389,145	\$245,510,789	\$252,263,863	\$262,031,892
TOTAL OF ALL PROGRAMS	\$401,308,029	\$390,939,192	\$405,304,235	\$489,435,911	\$495,719,842	\$503,254,650	\$511,744,075	\$504,488,174

* The history portion of the table is based on actual claims made by taxpayers; the numbers will not match the amount of awards issued. Values for FY 2018 through 2020 are actual claim numbers, but may increase as additional tax credit claims are verified.

¹² Estimates are based on actual claim information and assumed growth rates in future years.

¹³ Estimates are based on claim information collected from the IA 148 and forecasted future claims based on the Retailers Annual Fuel Gallons Report for 2019.

¹⁴ Estimates are based on claim information collected from the IA 148 and the average new claims from tax years 2016 and 2017 to estimate future new claims.

¹⁵ Estimates are based on the IDR individual income tax micro model.

¹⁶ Estimates are based on claim information collected from the IA 148 and forecasted awards based on historical awards.

¹⁷ Estimates are based on the Fiscal Note for HF 2468, 2016 Legislative session and the repeal of the tax credit effective December 31, 2018.

¹⁸ Estimates are based on the assumption that withholding tax credit awards are claimed against withholding tax equally over eight years. The income tax credit estimates are based on historical claims from the IA 148.

¹⁹ Estimates are based on claim information from the IA 148. This program ended July 1, 2005, no further claims are expected.

²⁰ Estimates are based on claim information collected from the IA 148, forecasted future claims based on the compound annual growth rate from past claims, and changes to eligibility effective beginning in tax year 2017 made in SF 2417, 2018 Legislative session.

²¹ Estimates are based on claim information collected from withholding returns and new awards are forecasted to equal average new awards from tax years 2007 through 2016. This program will expire June 30, 2021.

Table 9: Tax Credit Expected Claims Projection

Capped Programs	History*			Forecast				
	FY 2018	FY 2019	FY 2020	FY 2021	FY 2022	FY 2023	FY 2024	FY 2025
Accelerated Career Education Tax Credit ²²	\$4,253,415	\$4,146,207	\$4,598,615	\$4,160,197	\$4,160,197	\$4,160,197	\$4,160,197	\$4,160,197
Assistive Device Tax Credit ⁴	\$0	\$0	\$0	\$0	\$0	\$0	\$0	\$0
Beginning Farmer Tax Credit ²³	\$5,128,622	\$4,755,125	\$4,124,488	\$4,635,468	\$6,094,059	\$6,880,416	\$7,301,142	\$7,594,271
Custom Farming Contract Tax Credit ⁵	\$104,212	\$30,539	\$11,697	\$18,390	\$6,277	\$8,866	\$8,866	\$8,866
Endow Iowa Tax Credit ²⁴	\$5,874,393	\$5,167,603	\$4,405,244	\$5,088,342	\$5,049,170	\$5,049,170	\$5,049,170	\$5,049,170
Enterprise Zone Program ²⁵	\$5,046,473	\$2,147,319	\$773,792	\$1,053,056	\$761,560	\$315,077	\$98,514	\$87,075
Enterprise Zone Program - Housing Component ²⁵	\$8,002,277	\$7,163,320	\$4,826,342	\$3,687,583	\$766,051	\$214,876	\$0	\$0
Geothermal Heat Pump Tax Credit ⁷	\$495,540	\$175,792	\$500,058	\$1,066,034	\$1,137,221	\$1,083,667	\$566,160	\$126,723
High Quality Jobs Program ²³	\$36,688,404	\$34,940,477	\$30,054,795	\$56,336,250	\$61,535,661	\$50,087,567	\$45,843,270	\$43,099,474
Historic Preservation Tax Credit ²⁶	\$60,239,484	\$36,727,477	\$55,266,018	\$43,566,533	\$38,080,021	\$40,518,579	\$42,621,417	\$41,464,237
Redevelopment Tax Credit ²⁷	\$5,133,977	\$8,997,263	\$4,585,775	\$6,622,382	\$10,667,505	\$12,897,993	\$10,416,544	\$10,669,704
Renewable Chemical Production Tax Credit ²⁸	\$0	\$865	\$1,028,076	\$1,171,150	\$1,185,083	\$2,230,439	\$3,532,609	\$5,467,400
Renewable Energy Tax Credit ²³	\$3,688,173	\$5,259,899	\$6,065,328	\$4,573,346	\$6,306,073	\$6,024,200	\$5,425,072	\$5,151,560
School Tuition Organization Tax Credit ²⁴	\$11,836,187	\$10,921,558	\$9,658,728	\$11,957,371	\$13,476,993	\$15,030,564	\$16,565,909	\$18,231,242
Solar Energy System Tax Credit ³	\$3,759,747	\$4,210,847	\$3,923,779	\$4,165,905	\$4,314,105	\$2,317,363	\$1,634,777	\$1,423,251
Supplemental Research Activities Tax Credit ²³	\$3,363,819	\$2,633,504	\$2,478,431	\$2,673,395	\$1,347,698	\$2,030,887	\$2,838,351	\$2,768,949
Venture Capital Tax Credit - Innovation Fund ²³	\$861,527	\$1,167,885	\$1,366,217	\$3,429,345	\$4,225,096	\$4,288,710	\$3,762,862	\$3,478,992
Venture Capital Tax Credit - Qualifying Business ⁸	\$2,077,398	\$1,573,194	\$1,025,513	\$2,212,112	\$2,019,708	\$2,016,121	\$2,003,405	\$2,000,000
Venture Capital Tax Credit - Venture Capital Funds ¹⁰	\$750	\$8,819	\$2,395	\$0	\$0	\$0	\$0	\$0
Wind Energy Production Tax Credit ²³	\$947,746	\$3,716,701	\$659,921	\$1,119,811	\$484,330	\$421,316	\$494,425	\$498,522
Workforce Housing Tax Incentive Program ²⁴	\$9,442,745	\$16,029,954	\$21,288,407	\$28,714,688	\$24,611,938	\$22,782,246	\$23,483,012	\$23,913,220
TOTAL OF CAPPED PROGRAMS	\$166,944,889	\$149,774,348	\$156,643,619	\$186,251,360	\$186,228,746	\$178,358,254	\$175,805,701	\$175,192,854

²² Estimates are based on the average of historical claims.

²³ Estimates are based on claim information from the IA 148 and estimated future awards based on historical awards.

²⁴ Estimates are based on the expectation that less than 100 percent of awards will be claimed before expiration based on historical claims.

²⁵ Estimates are based on the program being repealed and the expectation that less than 100 percent of awards will be claimed before expiration based on historical claims.

²⁶ Estimates are based on the expectation that less than 100 percent of allocated projects will be completed and thus some projects will not ever receive awards.

²⁷ Estimates are based on the expectation that less than 100 percent of awards will be claimed before expiration based on historical claims for nonrefundable tax credit awards. It is assumed that 100 percent of the tax credit awards that are refundable, beginning in 2016, will be claimed.

²⁸ Estimates are based on the expectation that no awards will be issued for the first three years of the ten year program, but 100 percent of refundable credits will be claimed.

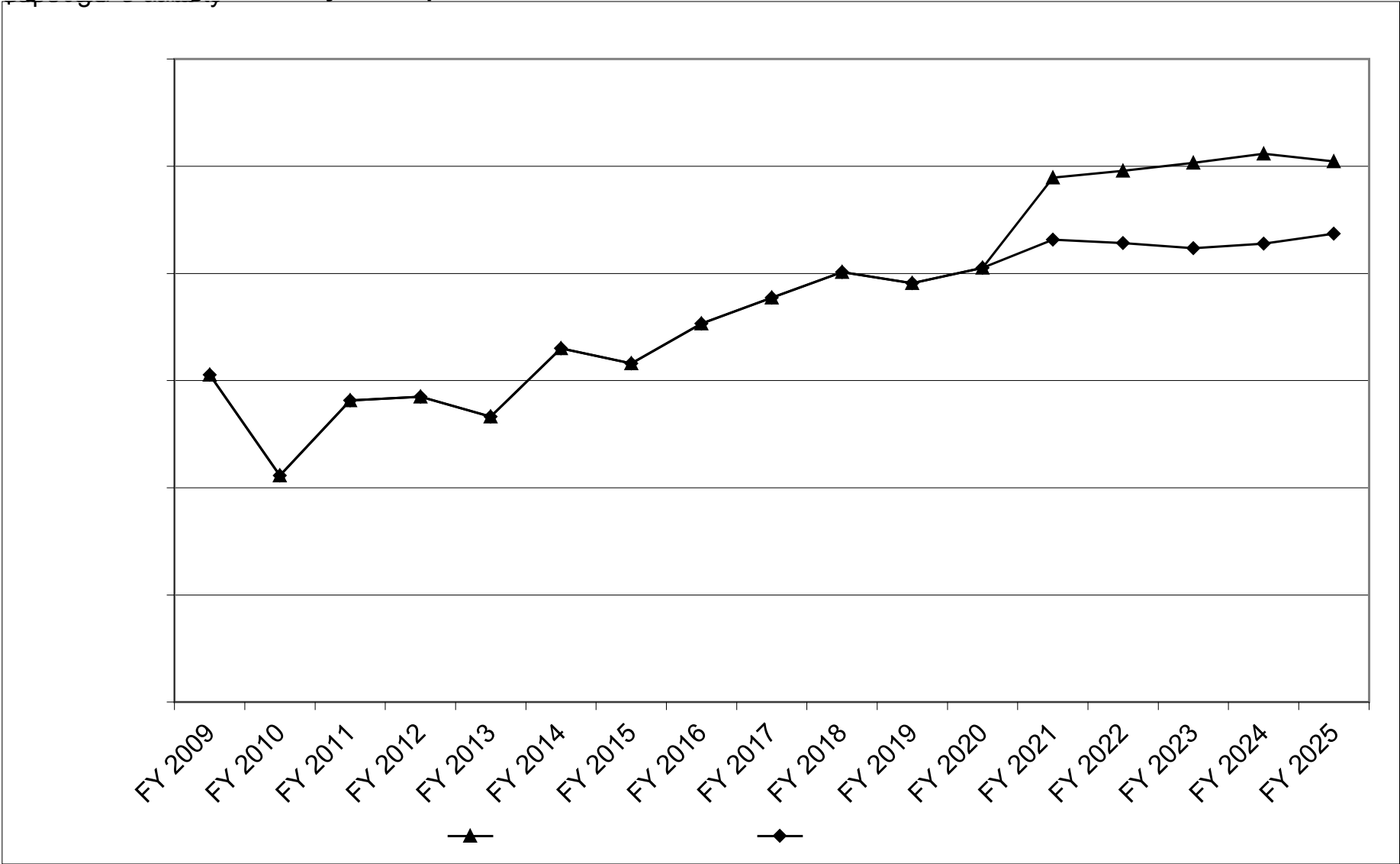
Table 9 Continued: Tax Credit Expected Claims Projection

Uncapped Programs	History*			Forecast				
	FY 2018	FY 2019	FY 2020	FY 2021	FY 2022	FY 2023	FY 2024	FY 2025
Adoption Tax Credit ¹²	\$974,932	\$999,837	\$946,198	\$1,386,816	\$1,537,559	\$1,703,962	\$1,888,373	\$2,092,742
Biodiesel Blended Fuel Tax Credit ¹³	\$18,341,310	\$17,326,088	\$18,245,203	\$23,188,983	\$18,530,336	\$19,468,137	\$20,419,606	\$20,876,197
Charitable Conservation Contribution Tax Credit ¹⁴	\$724,656	\$955,372	\$499,698	\$929,230	\$973,903	\$1,024,002	\$1,087,686	\$1,133,340
Child & Dependent Care Tax Credit ¹⁵	\$6,114,110	\$5,547,447	\$6,634,058	\$6,590,601	\$6,379,653	\$6,646,393	\$7,770,248	\$11,354,876
E15 Plus Gasoline Promotion Tax Credit ¹³	\$1,003,936	\$1,480,656	\$2,147,479	\$2,646,364	\$3,174,068	\$3,518,106	\$3,944,669	\$4,390,558
E85 Gasoline Promotion Tax Credit ¹³	\$2,552,412	\$2,623,828	\$2,679,815	\$2,882,772	\$2,345,422	\$2,492,394	\$2,689,888	\$2,869,961
Early Childhood Development Tax Credit ¹⁵	\$688,650	\$641,448	\$689,551	\$666,429	\$670,098	\$707,852	\$725,223	\$759,286
Earned Income Tax Credit ¹⁵	\$68,651,800	\$66,881,268	\$71,751,025	\$70,063,784	\$69,276,948	\$72,213,821	\$72,391,008	\$72,201,366
Ethanol Promotion Tax Credit ¹³	\$860,171	\$677,150	\$485,110	\$829,119	\$510,059	\$74,110	\$11,552	\$0
Farm to Food Donation Tax Credit ¹⁶	\$12,388	\$17,284	\$24,575	\$27,386	\$31,689	\$36,373	\$41,865	\$48,103
Geothermal Tax Credit ¹⁷	\$317,469	\$1,159,048	\$259,291	\$65,488	\$35,914	\$35,914	\$35,914	\$35,914
Iowa Industrial New Job Training Program (260E) ¹⁸	\$39,483,082	\$38,121,894	\$40,480,575	\$42,646,111	\$42,908,870	\$43,012,947	\$43,060,666	\$43,389,900
New Capital Investment Program ¹⁹	\$1,170	\$0	\$0	\$0	\$0	\$0	\$0	\$0
New Jobs and Income Program ¹⁹	\$1,617	\$0	\$0	\$0	\$0	\$0	\$0	\$0
Research Activities Tax Credit ²⁰	\$72,370,984	\$84,233,669	\$81,943,833	\$70,876,356	\$73,998,377	\$76,852,477	\$80,503,753	\$85,428,880
Targeted Jobs Tax Credit from Withholding ²⁹	\$5,591,349	\$4,739,246	\$5,786,735	\$6,303,867	\$5,685,163	\$1,156,186	\$1,104,910	\$1,036,326
Tuition and Textbook Tax Credit ¹⁵	\$15,306,991	\$14,459,487	\$14,799,679	\$14,931,560	\$14,635,885	\$14,973,323	\$15,003,195	\$14,879,426
Volunteer Firefighter and Emergency Medical Services Personnel and Reserve Peace Officer Tax Credit ¹⁵	\$1,366,113	\$1,301,122	\$1,287,790	\$1,308,980	\$1,273,909	\$1,305,747	\$1,309,078	\$1,275,934
TOTAL OF UNCAPPED PROGRAMS	\$234,363,140	\$241,164,844	\$248,660,616	\$245,343,846	\$241,967,854	\$245,221,743	\$251,987,636	\$261,772,810
TOTAL OF ALL PROGRAMS	\$401,308,029	\$390,939,192	\$405,304,235	\$431,595,206	\$428,196,600	\$423,579,996	\$427,793,337	\$436,965,664

* The history portion of the table is based on actual claims made by taxpayers; the numbers will not match the amount of awards issued. Values for FY 2018 through 2020 are actual claim numbers, but may increase as additional tax credit claims are verified.

²⁹ Estimates are based on the expectation that less than 100 percent of forecasted awards will be claimed before expiration based on historical claims. This program will expire June 30, 2021.

Figure 2: Contingent Liability and Expected Claims of Tax Credits in Iowa



Appendix: Description of Iowa's Tax Credit Programs

Accelerated Career Education Program (ACE) (260G): This withholding credit is administered by Iowa's Community Colleges and provides credits for employers that sponsor training slots at community colleges. Section 260G, Code of Iowa.

Adoption Tax Credit: This credit is available to individual taxpayers who pay or incur qualified adoption expenses. Section 422.12A, Code of Iowa

Assistive Device Tax Credit: This credit is awarded by the Iowa Economic Development Authority (IEDA) to taxpayers who make investments in assistive devices that allow for disability workplace accommodation. Section 422.33 (9), Code of Iowa.

Beginning Farmer Tax Credit: This credit is awarded by the Iowa Agricultural Development Division to taxpayers that lease agricultural assets to qualified beginning farmers. Sections 16.73 through 16.82, Code of Iowa.

Biodiesel Blended Fuel Tax Credit: This per gallon credit is available to retail dealers who sell biodiesel blended fuel. Section 422.11P, Code of Iowa.

Charitable Conservation Contribution Tax Credit: This credit is available to taxpayers who make an unconditional charitable donation of a qualified real property interest located in the State of Iowa to a qualified organization exclusively for conservation purposes. Section 422.11V, Code of Iowa.

Child & Dependent Care Tax Credit: This credit is available to individual taxpayers who have eligible child and dependent care expenses. Section 422.12C, Code of Iowa.

Custom Farming Contract Tax Credit: This credit was awarded by the Iowa Agricultural Development Division to taxpayers that hired qualified beginning farmers to perform custom contract farm work. Sections 16.73 through 16.82, Code of Iowa. This credit was repealed effective December 31, 2017.

E15 Plus Gasoline Promotion Tax Credit: This per gallon credit is available to retail dealers of gasoline who sell E15 or higher gasoline, but not classified as E85. Section 422.11Y, Code of Iowa.

E85 Gasoline Promotion Tax Credit: This per gallon credit is available to retail dealers of gasoline who sell E85 gasoline. Section 422.11O, Code of Iowa.

Early Childhood Development Tax Credit: This credit is equal to 25 percent of the first \$1,000 of expenses paid for early childhood development expenses for each dependent from the ages of three to five. Section 422.12C(1A), Code of Iowa.

Earned Income Tax Credit: This credit is available to individual taxpayers who qualify for the federal earned income tax credit. The credit is equal to 15 percent of the federal earned income tax credit for tax years 2014 and beyond. Section 422.12B, Code of Iowa.

Endow Iowa Tax Credit: This credit is awarded by IEDA and is equal to 25 percent of a taxpayer's endowment gift (up to \$100,000 for a single taxpayer) to a qualified community foundation. Section 15E.305, Code of Iowa.

Enterprise Zone Program (EZ): This program, administered by IEDA, encouraged investment in Iowa's economically distressed areas by providing local and state tax credits, refunds and exemptions to qualifying companies that expanded or located in designated Enterprise Zones. Section 15E.191 through 15E.196, Code of Iowa. This program was repealed effective July 1, 2014.

Ethanol Promotion Tax Credit: This credit replaced the Ethanol Blended Gasoline Tax Credit beginning in 2009. To be eligible, retail dealers must meet a rising biofuel threshold based on the annual sales of the dealer. If eligible the credit is based on the amount of pure ethanol gallons sold. Section 422.11N, Code of Iowa.

Farm to Food Donation Tax Credit: A tax credit is available to taxpayers who donate a food commodity to an Iowa food bank or an Iowa emergency feeding organization. The amount of the tax credit is equal to 15 percent of the value of the donated food. Section 422.11E, Code of Iowa.

Geothermal Heat Pump Tax Credit: This credit is equal to 20 percent of the federal residential energy efficient property tax credit allowed for geothermal thermal heat pumps in any year in which Iowa couples with the federal tax credit. Iowa was coupled in tax years 2012 through 2016 and again in tax years 2019 through 2021 when the federal credit expires. Section 422.11I, Code of Iowa.

Geothermal Tax Credit: This tax credit is equal to 10 percent of qualified expenditures on equipment that uses the ground or groundwater as a thermal energy source to heat the taxpayer's dwelling, or as a thermal energy sink to cool the dwelling in any year in which Iowa does not couple with the federal tax credit or in which the federal credit is expired. Section 422.10A, Code of Iowa. This credit is repealed effective December 31, 2018.

High Quality Jobs Program (HQJP): This program, administered by IEDA, provides tax benefits to eligible companies that create high-paying jobs and make capital investments. The program was created in 2005 and replaced the New Jobs and Income Program (NJIP) and the New Capital Investment Program (NCIP) beginning in FY 2006. Section 15.326 through 15.337, Code of Iowa.

Historic Preservation Tax Credit: This tax credit, administered by IEDA and the Iowa Department of Cultural Affairs, provides a 25 percent tax credit for qualified expenditures made in the rehabilitation of eligible historic properties. Section 404A, Code of Iowa.

Iowa Industrial New Jobs Training Program (260E): This program, administered by Iowa's Community Colleges, assists businesses that are creating new positions with new employee training. Participating companies divert withholding taxes that would be remitted to the Department of Revenue to a community college to pay for training for company employees. Section 260E, Code of Iowa.

New Capital Investment Program (NCIP): This program, administered by IEDA, was replaced by the High Quality Jobs Program, beginning in FY 2006. Section 15.381 through 15.387, Code of Iowa.

New Jobs and Income Program (NJIP): This program, administered by IEDA, was replaced by the High Quality Jobs Program, beginning in FY 2006. Section 15.326 through 15.337, Code of Iowa.

Redevelopment Tax Credit: This credit is available to taxpayers that invest in redeveloping a brownfield or grayfield site. Section 15.291 and 15.293, Code of Iowa.

Renewable Chemical Production Tax Credit Program: The tax credit, administered by IEDA, is equal to \$0.05 per pound of renewable chemicals produced from biomass feedstock in Iowa. The renewable chemicals must be produced on or after January 1, 2017, and on or before December 31, 2026. Sections 15.316 through 15.322, Code of Iowa.

Renewable Energy Tax Credit: This credit is available to a producer or purchaser of energy from a renewable energy facility approved as eligible by the Iowa Utilities Board (IUB). The Department of Revenue (IDR) determines the amount of the tax credits and issues tax credit certificates, which authorize credits to be claimed, to eligible applicants. Section 476C, Code of Iowa.

Research Activities Tax Credit: This credit is available to taxpayers who increase research activities in Iowa. The Iowa research tax credit relies on the federal definition of qualified research expenditures. Beginning with tax year 2017, businesses must meet the following requirements to be eligible for the credit: The business must claim and be allowed a Federal Research Credit for qualified research expenses under Internal Revenue Code section 41 for the same taxable year, and the business must be engaged in one of the following industries: manufacturing, life sciences, software engineering, or aviation and aerospace. Sections 15.335, 422.10 and 422.33(5), Code of Iowa.

School Tuition Organization Tax Credit: This credit, administered by IDR, is for 65 percent of the amount of a voluntary cash contribution made by a taxpayer to a school tuition organization. Section 422.11S, Code of Iowa.

Solar Energy System Tax Credit: This credit is available to individual and corporation taxpayers who install solar energy systems located in Iowa. Sections 422.11L and 422.33, Code of Iowa.

Targeted Jobs Tax Credit from Withholding: This pilot program, administered by IEDA and four pilot project cities, provides for a withholding credit equal to 3 percent of the gross wages paid by the employer to each employee under the withholding agreement. These funds are to be used by the pilot city for an urban renewal project related to the employer. Section 403.19A, Code of Iowa. This program expires June 30, 2021.

Taxpayers Trust Fund Tax Credit: The credit was equal to the amount of money transferred from the Iowa Taxpayers Trust Fund divided by the number of eligible individuals who filed Iowa Individual Income Tax returns by October 31 of the year proceeding the year in which the credit is allowed. Section 422.11E, Code of Iowa. This credit was repealed effective December 31, 2017.

Tuition and Textbook Tax Credit: This credit is available to individual taxpayers who have one or more dependents attending grades K-12 in an Iowa school. The credit percentage is 25 percent of the first \$1,000 paid for each dependent for tuition and textbooks. Section 422.12 (2), Code of Iowa.

Venture Capital Tax Credit – Innovation Fund: This credit, administered by IEDA, is allowed for investments in businesses applying novel or original methods to manufacture a product or the delivery of a service. Section 15E.52, Code of Iowa.

Venture Capital Tax Credit – Iowa Fund of Funds: This contingent tax credit, administered by the Iowa Capital Investment Board (ICIB), is allowed for investments made into the Iowa fund of funds. The tax credit is only allowed to the extent that the actual rate of return on these investments does not meet the rate of return guaranteed to investors. Section 15E.61 through 15E.69, Code of Iowa.

Venture Capital Tax Credit – Qualifying Business: Effective July 1, 2015 this credit, administered by IEDA, is 25 percent of the equity investment made into a qualifying business. Sections 15E.41 through 15E.46, Code of Iowa.

Venture Capital Tax Credit – Venture Capital Funds: This credit, administered by ICIB, was 6 percent of the equity investment made in a venture capital fund. This credit was repealed effective July 1, 2010. Section 15E.51, Code of Iowa.

Volunteer Firefighter and Emergency Medical Services Personnel and Reserve Peace Officer Tax Credit: This credit is available for volunteer firefighters, volunteer emergency medical services personnel, and reserve peace officers. Section 422.12, Code of Iowa.

Wind Energy Production Tax Credit: This credit is for electrical production facilities that produce electricity from wind and are approved as eligible by the local board of supervisors and the IUB. IDR determines the amount of the tax credits and issues tax credit certificates to eligible applicants. Section 476B, Code of Iowa.

Workforce Housing Tax Incentive Program: This tax credit program, administered by IEDA, is available to taxpayers who complete a qualifying housing project in Iowa. Sections 15.351 through 15.356, Code of Iowa.